

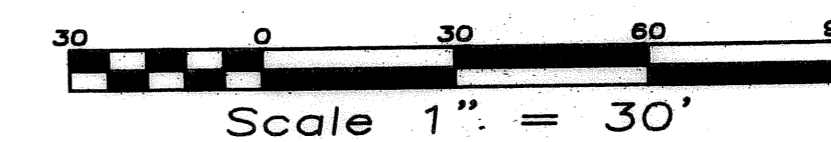
100

STATE OF FLORIDA  
COUNTY OF PALM BEACH  
THIS PLAT WAS FILED FOR  
RECORD \_\_\_\_\_ DAY OF \_\_\_\_\_  
AD, \_\_\_\_\_ AND DULY RECORDED  
IN PLAT BOOK \_\_\_\_\_ ON PAGES  
\_\_\_\_\_ AND \_\_\_\_\_  
BY: \_\_\_\_\_ CLERK  
D.C.

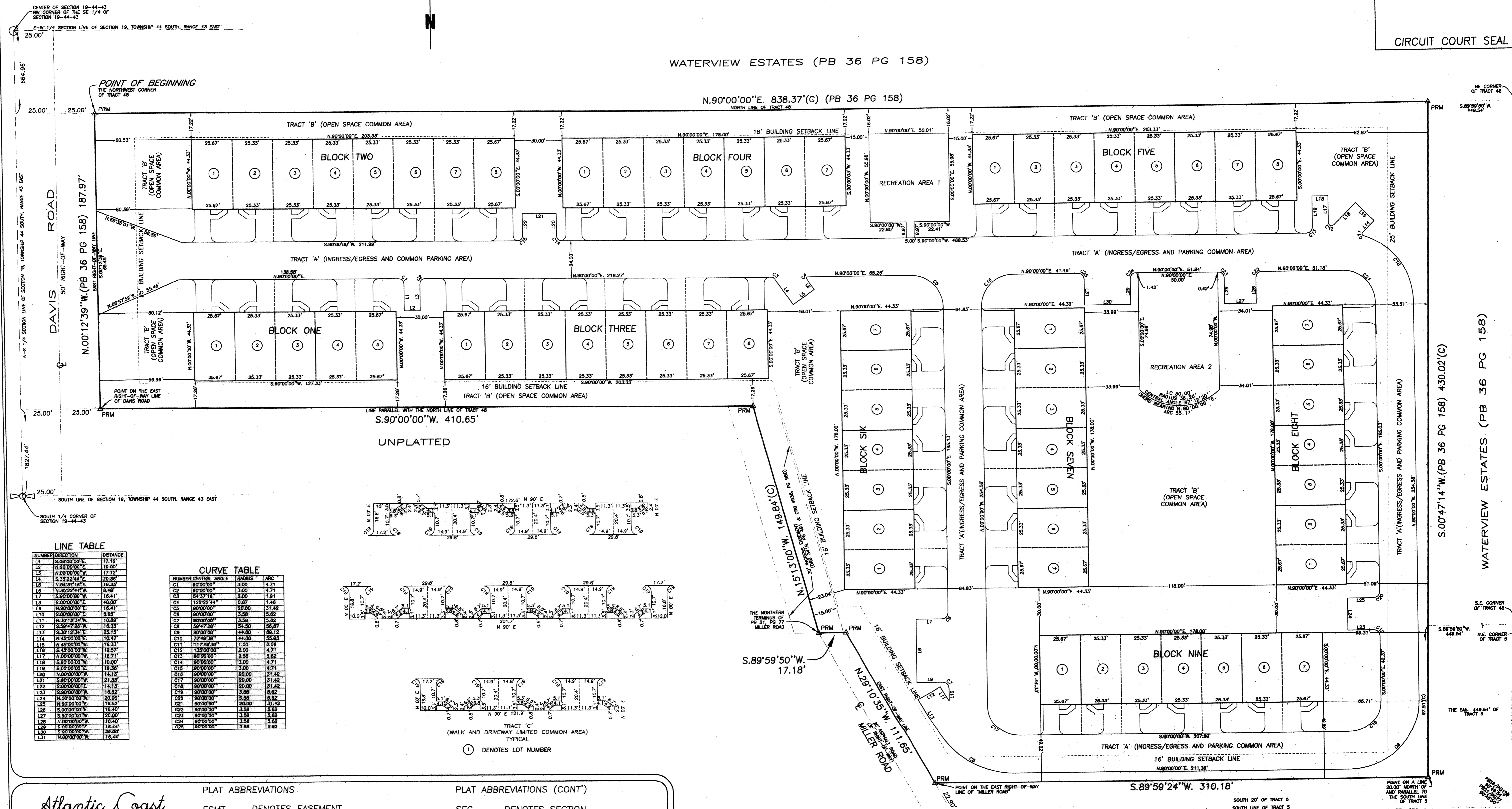
CIRCUIT COURT SEAL

# ESTANCIA AT PALM SPRINGS

LYING IN SECTION 19, TOWNSHIP 44 SOUTH, RANGE 43 EAST  
VILLAGE OF PALM SPRINGS, PALM BEACH COUNTY, FLORIDA



WATERVIEW ESTATES (PB 36 PG 158)

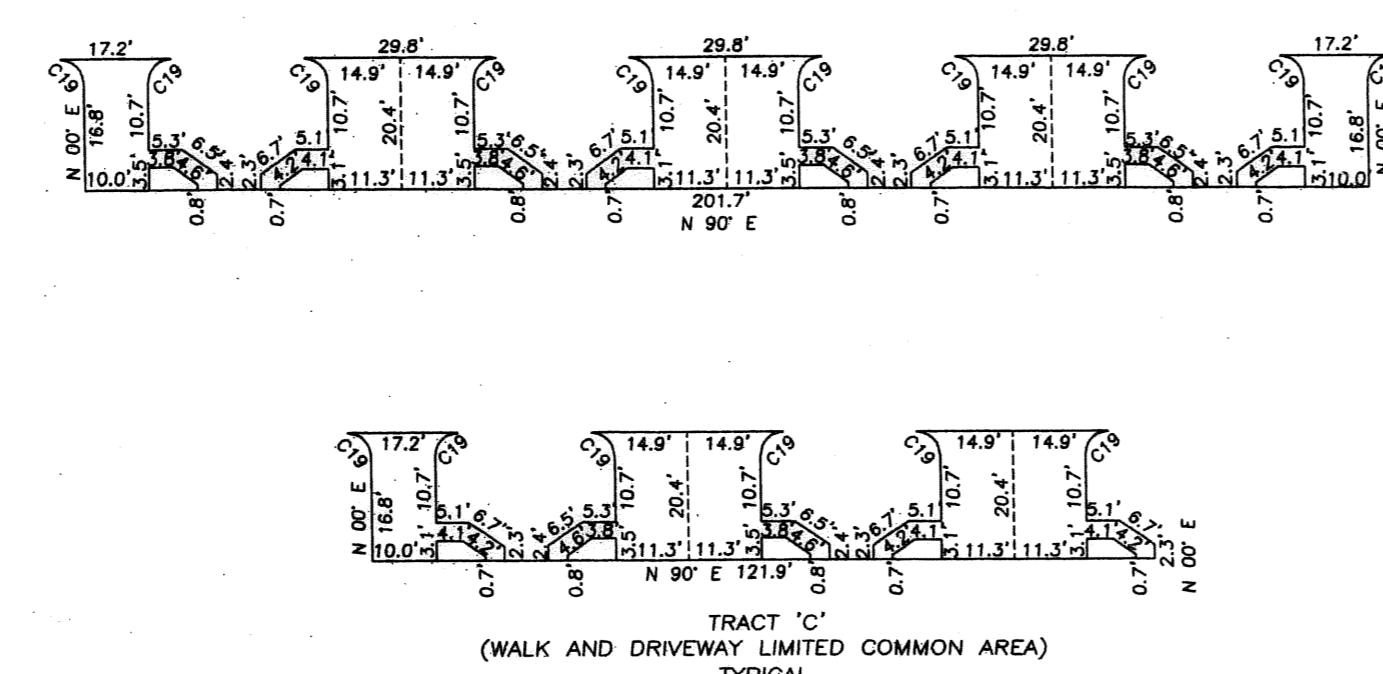


**LINE TABLE**

NUMBER	DIRECTION	DISTANCE
L1	S.00°00'00"W	12.12
L2	N.90°00'00"E	10.00
L3	N.00°00'00"W	17.12
L4	S.89°59'50"W	20.36
L5	N.24°33'18"E	16.33
L6	N.35°22'44"W	8.48
L7	S.89°00'00"W	18.11
L8	N.00°00'00"W	40.00
L9	N.89°00'00"E	18.41
L10	S.00°00'00"E	6.82
L11	N.30°12'34"W	10.89
L12	S.58°47'28"W	18.33
L13	S.30°12'34"E	25.15
L14	N.45°00'00"E	10.47
L15	N.45°00'00"W	18.33
L16	S.45°00'00"W	18.33
L17	N.00°00'00"W	16.71
L18	S.89°00'00"W	10.00
L19	S.00°00'00"E	18.33
L20	N.00°00'00"W	14.13
L21	S.89°00'00"W	21.33
L22	S.00°00'00"E	14.13
L23	S.90°00'00"W	16.32
L24	N.00°00'00"W	20.00
L25	N.89°00'00"E	18.33
L26	S.00°00'00"E	18.40
L27	S.89°00'00"W	20.00
L28	N.00°00'00"W	18.40
L29	S.00°00'00"E	18.44
L30	N.89°00'00"E	28.50
L31	N.00°00'00"W	18.44

**CURVE TABLE**

NUMBER	CENTRAL ANGLE	RADIUS	ARC
C1	90°00'00"	3.00	4.71
C2	80°00'00"	3.00	4.71
C3	54°37'18"	2.00	1.81
C4	125°22'44"	0.67	1.48
C5	80°00'00"	20.00	31.42
C6	80°00'00"	3.58	5.82
C7	80°00'00"	3.58	5.82
C8	59°47'28"	54.50	95.87
C9	80°00'00"	44.50	86.12
C10	72°49'39"	44.00	55.83
C11	117°49'39"	1.00	2.08
C12	138°00'00"	2.00	4.71
C13	80°00'00"	3.58	5.82
C14	80°00'00"	3.00	4.71
C15	80°00'00"	3.00	4.71
C16	80°00'00"	3.58	5.82
C17	80°00'00"	20.00	31.42
C18	80°00'00"	3.58	5.82
C19	80°00'00"	3.58	5.82
C20	80°00'00"	3.58	5.82
C21	80°00'00"	20.00	31.42
C22	80°00'00"	3.58	5.82
C23	80°00'00"	3.58	5.82
C24	80°00'00"	1.58	5.82
C25	80°00'00"	3.58	5.82



*Atlantic Coast*  
**SURVEYING, INC.**  
LB NO. 5495  
5615 S. UNIVERSITY DR. DAVIE (954)252-5254  
DAVIE, FLORIDA 33328 BOCA (561)488-9628  
FAX (954)252-5358  
© 2002 ATLANTIC COAST SURVEYING INC.

**PLAT ABBREVIATIONS**  
ESMT DENOTES EASEMENT  
FPL DENOTES FLORIDA POWER & LIGHT  
NTS DENOTES NOT TO SCALE  
PB DENOTES PLAT BOOK  
PCP DENOTES PERMANENT CONTROL POINT  
PG DENOTES PAGE  
POB DENOTES POINT OF BEGINNING  
POC DENOTES POINT OF COMMENCEMENT  
PRM DENOTES PERMANENT REFERENCE MONUMENT

**PLAT ABBREVIATIONS (CONT')**  
SEC DENOTES SECTION  
SQ.FT. DENOTES SQUARE FEET  
C DENOTES CALCULATED  
LD DENOTES LEGAL DESCRIPTION  
ORB DENOTES OFFICIAL RECORDS BOOK